

\$745,000 - 3567 Mclay Crescent, Edmonton

MLS® #E4426037

\$745,000

3 Bedroom, 2.50 Bathroom, 2,608 sqft

Single Family on 0.00 Acres

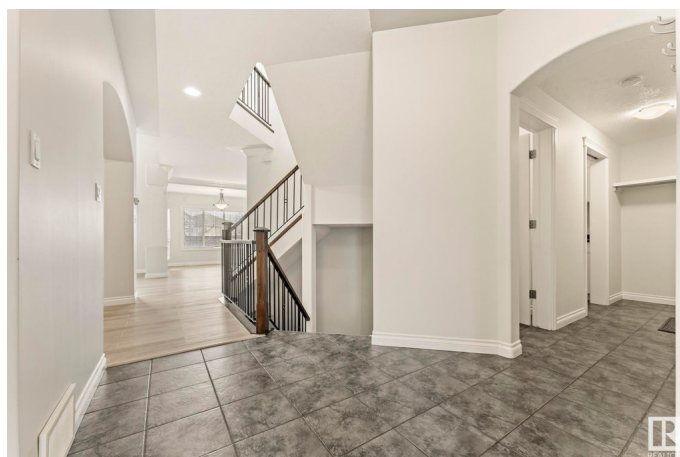
MacTaggart, Edmonton, AB

This charming home features over 2600sqft above grade. You are greeted by a grand main floor that is flooded with natural light. The chefs kitchen features granite countertops, a walkthrough pantry and stainless steel appliances. Adjacent you will find a cozy breakfast nook, 2 story vaulted living room with a gas fireplace, creating an inviting space for family gatherings. There is a seperate formal dining room and main floor office. Upstairs, you'll find a large bonus room along with two generously sized bedrooms equipped with closet organizers, plus a well-appointed four-piece bathroom. The primary bedroom is a highlight, offering abundant natural light and ample space, while the luxurious five-piece en suite bath transforms it into a true retreat. Enjoy the large back deck, perfect for hosting summer barbecues and outdoor entertaining. This home is designed for both relaxation and enjoyment, making it an ideal place to create lasting memories!

Built in 2007

Essential Information

MLS® #	E4426037
Price	\$745,000
Bedrooms	3
Bathrooms	2.50



Full Baths	2
Half Baths	1
Square Footage	2,608
Acres	0.00
Year Built	2007
Type	Single Family
Sub-Type	Detached Single Family
Style	2 Storey
Status	Active

Community Information

Address	3567 Mclay Crescent
Area	Edmonton
Subdivision	MacTaggart
City	Edmonton
County	ALBERTA
Province	AB
Postal Code	T6R 0C4

Amenities

Amenities	Closet Organizers, Deck, No Animal Home, No Smoking Home
Parking Spaces	4
Parking	Double Garage Attached

Interior

Interior Features	ensuite bathroom
Appliances	Dryer, Garage Control, Garage Opener, Microwave Hood Fan, Refrigerator, Stove-Electric, Washer, Window Coverings
Heating	Forced Air-1, Natural Gas
Fireplace	Yes
Fireplaces	Stone Facing
Stories	2
Has Basement	Yes
Basement	Full, Unfinished

Exterior

Exterior	Wood, Stone, Vinyl
Exterior Features	Landscaped, Level Land, Playground Nearby, Schools, Shopping Nearby

Roof	Asphalt Shingles
Construction	Wood, Stone, Vinyl
Foundation	Concrete Perimeter

School Information

Elementary	George P. Nicholson School
Middle	Nellie Carlson School
High	Lillian Osborne School

Additional Information

Date Listed	March 16th, 2025
Days on Market	34
Zoning	Zone 14

DATA IS DEEMED RELIABLE BUT IS NOT GUARANTEED ACCURATE BY THE REALTORS® ASSOCIATION OF EDMONTON. COPYRIGHT 2025 BY THE REALTORS® ASSOCIATION OF EDMONTON. ALL RIGHTS RESERVED. Trademarks are owned or controlled by the Canadian Real Estate Association (CREA) and identify real estate professionals who are members of CREA (REALTOR®, REALTORS®) and/or the quality of services they provide (MLS®, Multiple Listing Service®)

Listing information last updated on April 19th, 2025 at 2:47pm MDT