

Courtesy Of Celeste M Plaizier Of Real Broker

\$759,900 - 37 Darby Crescent, Spruce Grove

MLS® #E4427034

\$759,900

3 Bedroom, 2.50 Bathroom, 2,475 sqft
Single Family on 0.00 Acres

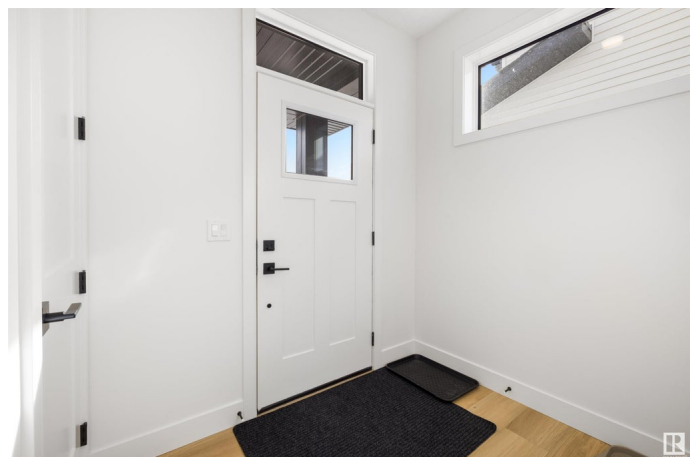
Deer Park_SPGR, Spruce Grove, AB

This beautifully designed 3-bed, 2.5-bath home by HRD offers over 2,400 sq ft of luxury living. With 9' ceilings, 8' doors, and luxury vinyl plank flooring, every detail feels upscale yet inviting. The main living space features a gas fireplace with stone masonry and custom arched shelves, while the chef's kitchen boasts a large island, quartz countertops, stainless steel appliances, and a custom hood fan. A main-floor office with feature walls adds function and style. Upstairs, a vaulted bonus room provides extra space, and the spa-like ensuite includes a free-standing soaker tub and glass shower. The heated triple garage is fully equipped with a floor drain and hot/cold hose bibs. Plus, enjoy year-round comfort with central AC!

Built in 2024

Essential Information

MLS® #	E4427034
Price	\$759,900
Bedrooms	3
Bathrooms	2.50
Full Baths	2
Half Baths	1
Square Footage	2,475
Acres	0.00



Year Built	2024
Type	Single Family
Sub-Type	Detached Single Family
Style	2 Storey
Status	Active

Community Information

Address	37 Darby Crescent
Area	Spruce Grove
Subdivision	Deer Park_SPGR
City	Spruce Grove
County	ALBERTA
Province	AB
Postal Code	T7X 0W9

Amenities

Amenities	Air Conditioner, Carbon Monoxide Detectors, Detectors Smoke, See Remarks, 9 ft. Basement Ceiling
Parking Spaces	6
Parking	Triple Garage Attached

Interior

Interior Features	ensuite bathroom
Appliances	Hood Fan, Refrigerator, Stove-Gas
Heating	Forced Air-1, Natural Gas
Fireplace	Yes
Fireplaces	Mantel, Stone Facing
Stories	2
Has Basement	Yes
Basement	Full, Unfinished

Exterior

Exterior	Wood, Stone, Vinyl
Exterior Features	Golf Nearby, Playground Nearby, Schools, Shopping Nearby
Roof	Asphalt Shingles
Construction	Wood, Stone, Vinyl
Foundation	Concrete Perimeter

Additional Information

Date Listed March 22nd, 2025

Days on Market 21

Zoning Zone 91

DATA IS DEEMED RELIABLE BUT IS NOT GUARANTEED ACCURATE BY THE REALTORS® ASSOCIATION OF EDMONTON. COPYRIGHT 2025 BY THE REALTORS® ASSOCIATION OF EDMONTON. ALL RIGHTS RESERVED. Trademarks are owned or controlled by the Canadian Real Estate Association (CREA) and identify real estate professionals who are members of CREA (REALTOR®, REALTORS®) and/or the quality of services they provide (MLS®, Multiple Listing Service®)

Listing information last updated on April 12th, 2025 at 5:17am MDT