

# \$169,900 - 402 4309 33 Street, Stony Plain

MLS® #E4427470

**\$169,900**

2 Bedroom, 2.00 Bathroom, 845 sqft  
Condo / Townhouse on 0.00 Acres

South Business Park, Stony Plain, AB

This is a great apartment condo on the top floor with a large balcony, underground parking, and a great layout. You'll appreciate the ensuite laundry, loads of kitchen storage, and ensuite bathroom. There's a lot to love about this Stony Plain condo, so take the time to enjoy it for yourself! Note - some photos are virtually staged.

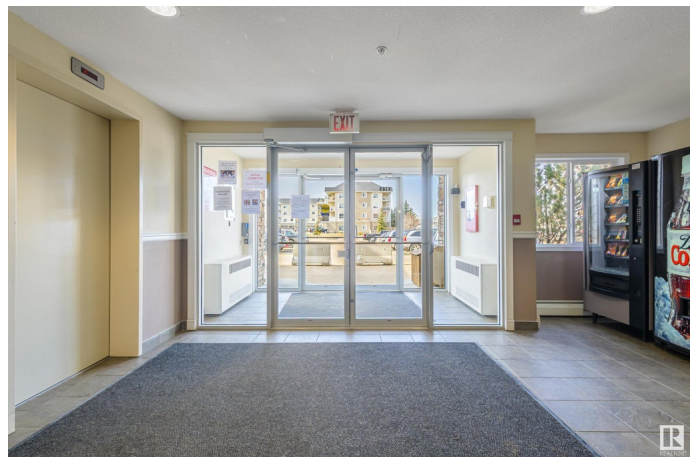
Built in 2008

## Essential Information

MLS® #	E4427470
Price	\$169,900
Bedrooms	2
Bathrooms	2.00
Full Baths	2
Square Footage	845
Acres	0.00
Year Built	2008
Type	Condo / Townhouse
Sub-Type	Lowrise Apartment
Style	Single Level Apartment
Status	Active

## Community Information

Address	402 4309 33 Street
Area	Stony Plain



Subdivision	South Business Park
City	Stony Plain
County	ALBERTA
Province	AB
Postal Code	T7Z 0A8

### **Amenities**

Amenities	Deck, Detectors Smoke, Hot Water Natural Gas, No Animal Home, No Smoking Home, Parking-Extra, Parking-Visitor, Vinyl Windows
Parking Spaces	1
Parking	Heated, Underground

### **Interior**

Interior Features	ensuite bathroom
Appliances	Dishwasher-Built-In, Dryer, Microwave Hood Fan, Refrigerator, Stove-Electric, Washer, Window Coverings
Heating	Hot Water, Natural Gas
Fireplace	Yes
Fireplaces	Corner
# of Stories	4
Stories	1
Has Basement	Yes
Basement	None, No Basement

### **Exterior**

Exterior	Wood, Vinyl
Exterior Features	Flat Site, Landscaped, Public Swimming Pool, Shopping Nearby
Roof	Asphalt Shingles
Construction	Wood, Vinyl
Foundation	Concrete Perimeter

### **Additional Information**

Date Listed	March 26th, 2025
Days on Market	13
Zoning	Zone 91
Condo Fee	\$507

DATA IS DEEMED RELIABLE BUT IS NOT GUARANTEED ACCURATE BY THE REALTORS® ASSOCIATION OF EDMONTON. COPYRIGHT 2025 BY THE REALTORS® ASSOCIATION OF EDMONTON. ALL RIGHTS RESERVED. Trademarks are owned or controlled by the Canadian Real Estate Association (CREA) and identify real estate professionals who are members of CREA (REALTOR®, REALTORS®) and/or the quality of services they

provide (MLS® , Multiple Listing Service®)

Listing information last updated on April 8th, 2025 at 4:02pm MDT