

Courtesy Of Sean Bourgeault Of RE/MAX River City

\$235,000 - 1205 7339 South Terwillegar Drive, Edmonton

MLS® #E4427739

\$235,000

2 Bedroom, 2.00 Bathroom, 956 sqft
Condo / Townhouse on 0.00 Acres

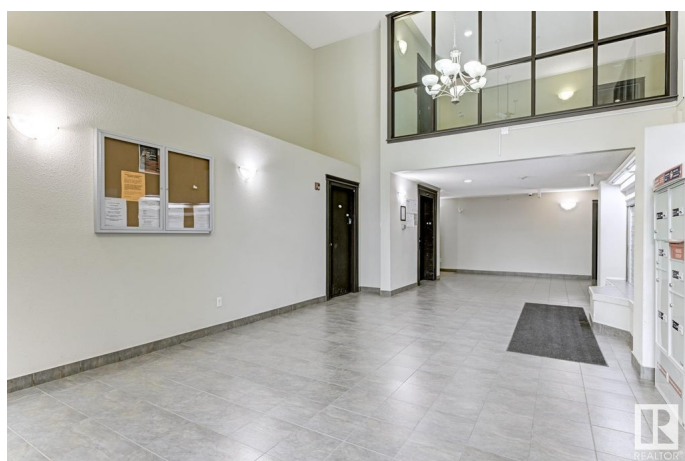
South Terwillegar, Edmonton, AB

Spacious 2-Bedroom, 2-Bathroom Unit with 2 Parking Stalls. Welcome to this bright and open-concept layout with large windows that fill the space with natural light. The kitchen is perfect for both everyday cooking and entertaining, offering a large countertop, plenty of cabinetry for storage, and a convenient pantry for added organization. The master bedroom is a comfortable retreat with a spacious 4-piece ensuite, providing privacy and convenience, along with a walk-through closet for ample storage space. The second bedroom is thoughtfully located near the second 4-piece bathroom, providing flexibility for guests or family. Additional features include a large in-suite laundry area with a newer washer and dryer, offering extra storage and convenience, and two titled, side-by-side parking stalls, ensuring hassle-free parking. This condo is ideally located with easy access to the Henday, nearby walking trails, parks, schools, and a Recreation Centre.

Built in 2007

Essential Information

MLS® #	E4427739
Price	\$235,000
Bedrooms	2



Bathrooms	2.00
Full Baths	2
Square Footage	956
Acres	0.00
Year Built	2007
Type	Condo / Townhouse
Sub-Type	Lowrise Apartment
Style	Single Level Apartment
Status	Active

Community Information

Address	1205 7339 South Terwillegar Drive
Area	Edmonton
Subdivision	South Terwillegar
City	Edmonton
County	ALBERTA
Province	AB
Postal Code	T6R 0E1

Amenities

Amenities	Parking-Visitor, Storage-In-Suite, Vinyl Windows
Parking	2 Outdoor Stalls

Interior

Interior Features	ensuite bathroom
Appliances	Dishwasher-Built-In, Microwave Hood Fan, Refrigerator, Stacked Washer/Dryer, Stove-Electric
Heating	Baseboard, Natural Gas
# of Stories	4
Stories	1
Has Basement	Yes
Basement	None, Unfinished

Exterior

Exterior	Wood, Stone, Vinyl
Exterior Features	Golf Nearby, Playground Nearby, Public Transportation, Schools
Roof	Asphalt Shingles
Construction	Wood, Stone, Vinyl
Foundation	Concrete Perimeter

Additional Information

Date Listed	March 27th, 2025
Days on Market	23
Zoning	Zone 14
Condo Fee	\$466

DATA IS DEEMED RELIABLE BUT IS NOT GUARANTEED ACCURATE BY THE REALTORS® ASSOCIATION OF EDMONTON. COPYRIGHT 2025 BY THE REALTORS® ASSOCIATION OF EDMONTON. ALL RIGHTS RESERVED.Trademarks are owned or controlled by the Canadian Real Estate Association (CREA) and identify real estate professionals who are members of CREA (REALTOR®, REALTORS®) and/or the quality of services they provide (MLS®, Multiple Listing Service®)

Listing information last updated on April 19th, 2025 at 2:17am MDT