

\$389,000 - 14824 73a Street, Edmonton

MLS® #E4430668

\$389,000

4 Bedroom, 2.50 Bathroom, 1,213 sqft

Single Family on 0.00 Acres

Kilkenny, Edmonton, AB

Immaculate Original-Owner Bungalow – A Rare Find! Step into a home where meticulous care meets vibrant living. This pristine bungalow offers a sunlit main floor with vaulted ceilings, three bedrooms, including a primary bedroom with a dual-entry 2-piece ensuite, living room and 4-piece bath. The kitchen is a culinary haven, complete with a central island and large bright windows that create a warm and inviting atmosphere. The finished basement is a true entertainment paradise with a generous family room, built-in bar, additional bedroom, 3-piece bathroom, and a dedicated laundry room. It’s the perfect setting for hosting gatherings or enjoying unforgettable family nights. Outside, the fully fenced backyard features a manicured lawn adorned with vibrant perennials and a private patio, perfect for outdoor entertaining. A double detached garage provides extensive storage and extra parking on the pad. This home isn’t just move-in ready; it’s a lifestyle upgrade.

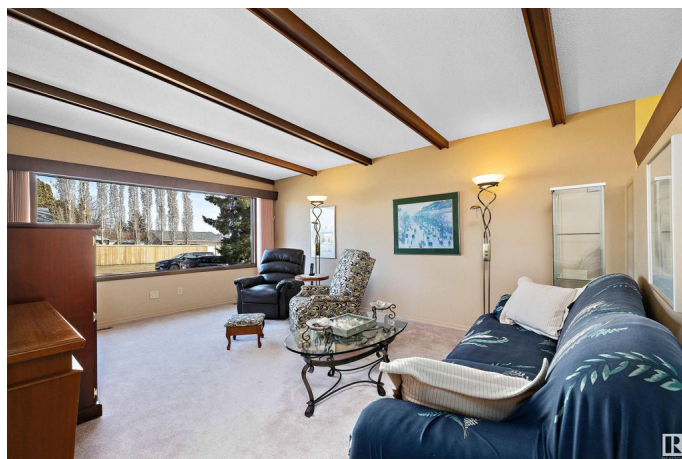
Built in 1969

Essential Information

MLS® # E4430668

Price \$389,000

Bedrooms 4



Bathrooms	2.50
Full Baths	2
Half Baths	1
Square Footage	1,213
Acres	0.00
Year Built	1969
Type	Single Family
Sub-Type	Detached Single Family
Style	Bungalow
Status	Active

Community Information

Address	14824 73a Street
Area	Edmonton
Subdivision	Kilkenny
City	Edmonton
County	ALBERTA
Province	AB
Postal Code	T5C 0W4

Amenities

Amenities	On Street Parking, Detectors Smoke, No Animal Home, No Smoking Home, Parking-Extra, Patio, Vaulted Ceiling
Parking	Double Garage Detached, Over Sized

Interior

Interior Features	ensuite bathroom
Appliances	Dishwasher-Built-In, Dryer, Freezer, Garage Control, Garage Opener, Hood Fan, Refrigerator, Stove-Electric, Washer, Window Coverings
Heating	Forced Air-1, Natural Gas
Fireplace	Yes
Fireplaces	Brick Facing
Stories	2
Has Basement	Yes
Basement	Full, Finished

Exterior

Exterior	Wood, Vinyl
Exterior Features	Back Lane, Fenced, Fruit Trees/Shrubs, Golf Nearby, Low Maintenance

Landscape, Paved Lane, Playground Nearby, Public Swimming Pool,
Public Transportation, Schools, Shopping Nearby

Roof	Asphalt Shingles
Construction	Wood, Vinyl
Foundation	Concrete Perimeter

School Information

Elementary	J A Fife;Father Leo Green
Middle	J J Bowlen; St Cecilia
High	M E Lazerte; Arch O'Leary

Additional Information

Date Listed	April 13th, 2025
Days on Market	6
Zoning	Zone 02

DATA IS DEEMED RELIABLE BUT IS NOT GUARANTEED ACCURATE BY THE REALTORS® ASSOCIATION OF EDMONTON. COPYRIGHT 2025 BY THE REALTORS® ASSOCIATION OF EDMONTON. ALL RIGHTS RESERVED.Trademarks are owned or controlled by the Canadian Real Estate Association (CREA) and identify real estate professionals who are members of CREA (REALTOR®, REALTORS®) and/or the quality of services they provide (MLS®, Multiple Listing Service®)

Listing information last updated on April 19th, 2025 at 3:47pm MDT